

ADA COUNTY ASSESSOR'S OFFICE

The seal of Ada County, Idaho, is a circular emblem. It features an eagle with spread wings perched on a mountain range. Above the eagle are three stars. The words "ADA COUNTY" are arched across the top, and "STATE OF IDAHO" is arched across the bottom. A banner at the bottom of the seal reads "Established 1864".

MaxView Software Installation Instructions

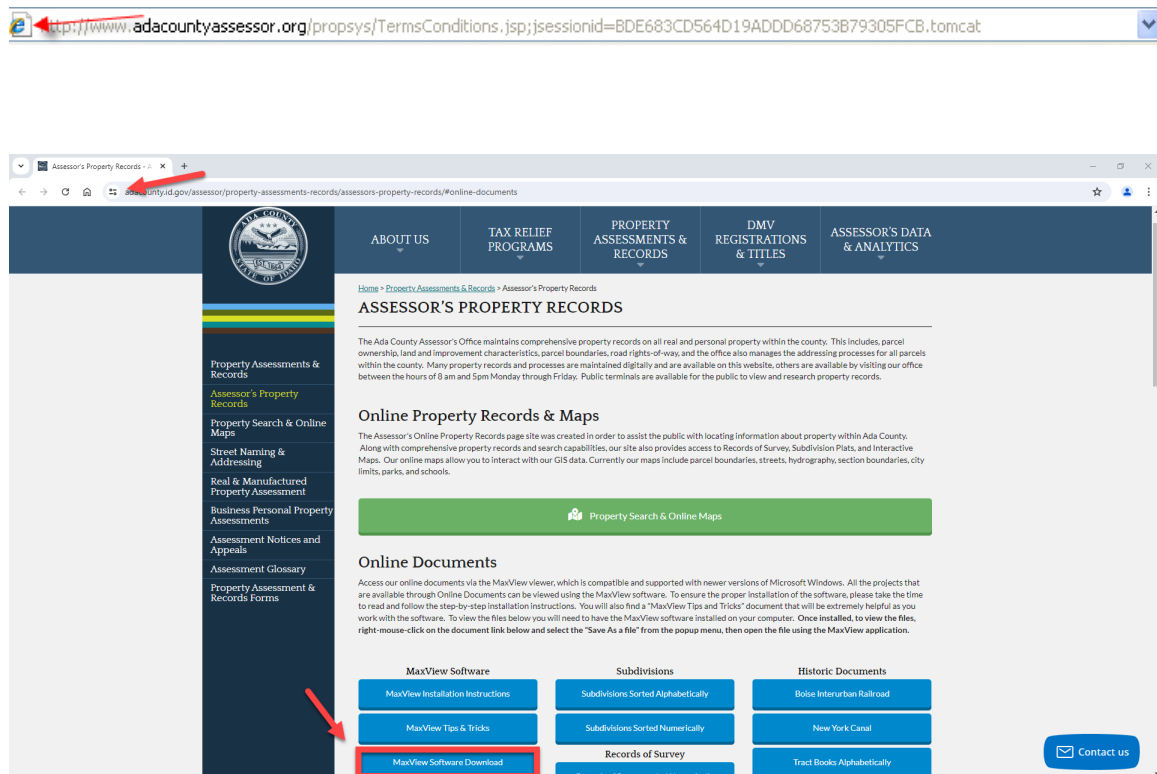
190 E Front St. Ste 107
Boise ID 83702
208.287.7200

Maxview is the Microsoft Windows replacement for SVReader and Intranetix Subdivision plats and Records of Survey viewers. This document will walk through the installation of MaxView and instruct how to open the projects currently available.

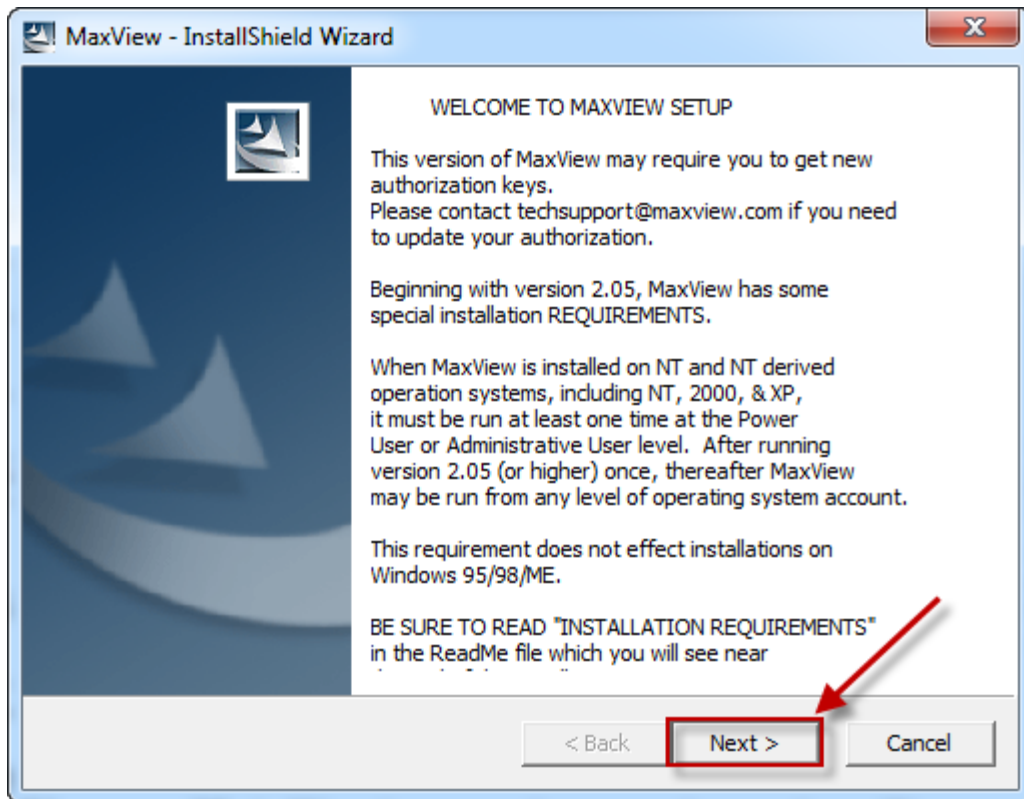
Please do not accept the defaults in the Installation Wizard. Instead, PLEASE FOLLOW THESE INSTALLATION INSTRUCTIONS STEP BY STEP

Installation

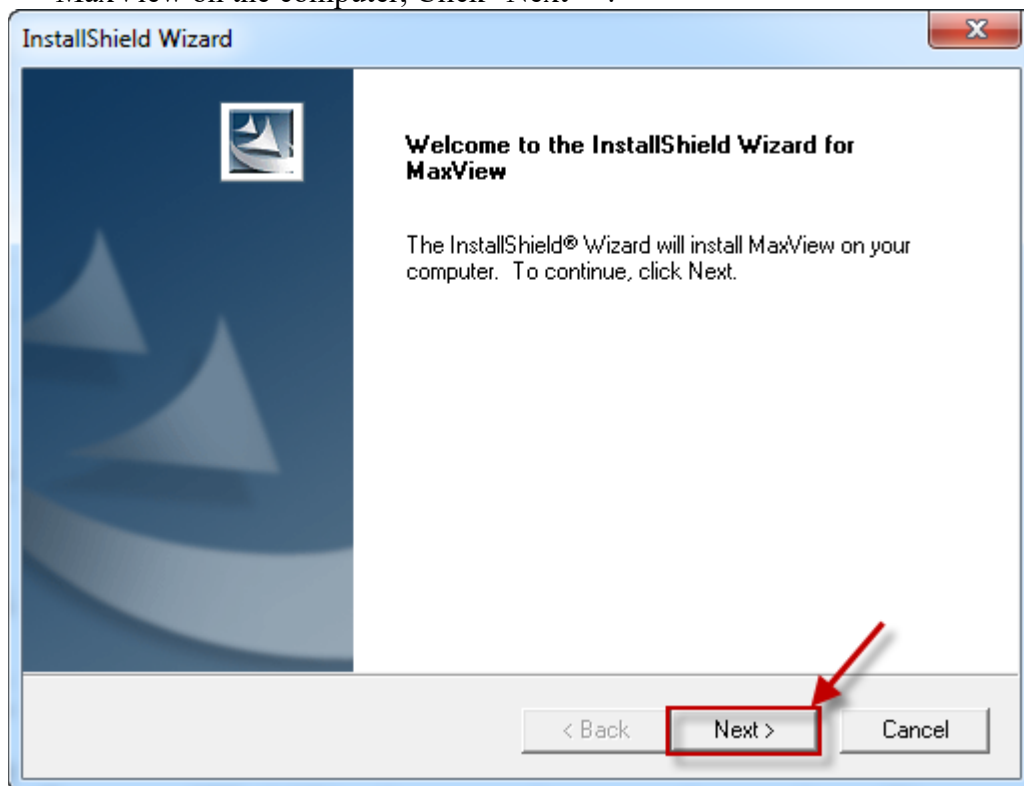
1. Download the Maxview installation executable from our website:
<https://adacounty.id.gov/assessor/property-assessments-records/assessors-property-records/#online-documents>
2. Add a shortcut to the desktop for easy access to this website, if desired. Left click on the icon to the left of the address bar and drag to the desktop.



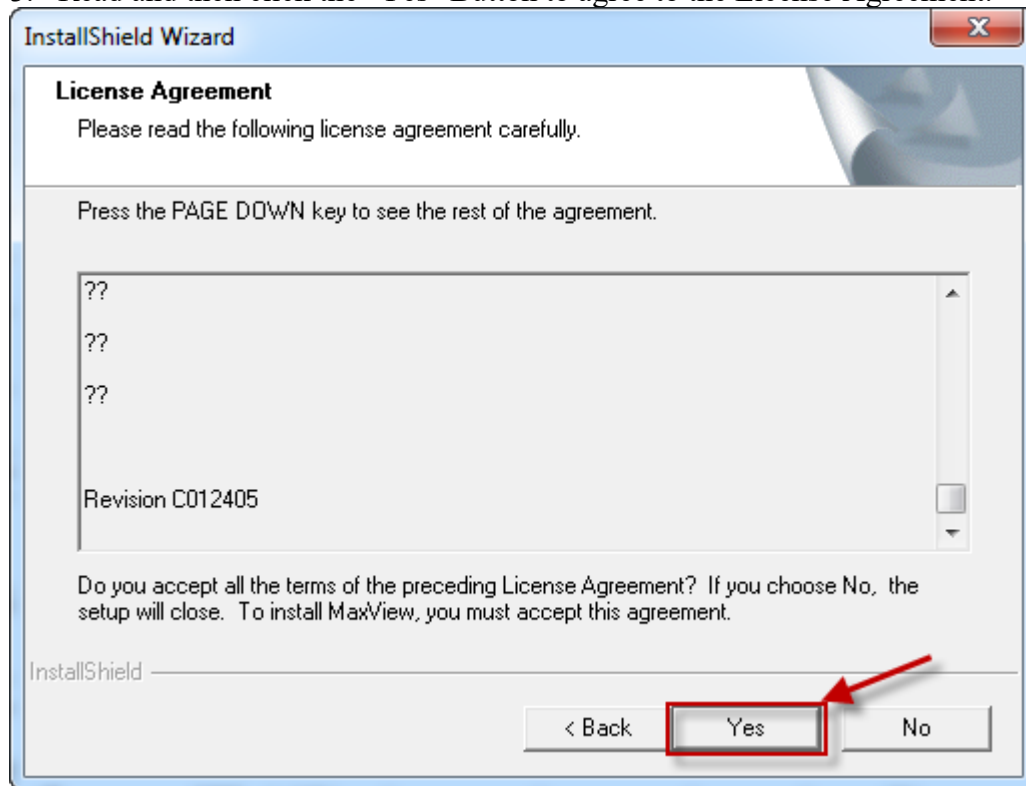
1. Click on the MaxView install executable link and a popup window will appear. It gives the option to run or save the file, click "Run". If a security warning message stating that "The publisher could not be verified" appears, click on the "Run" button or an "Install Anyway" button to continue. A MaxView InstallShield Wizard screen will open, click "Next >".



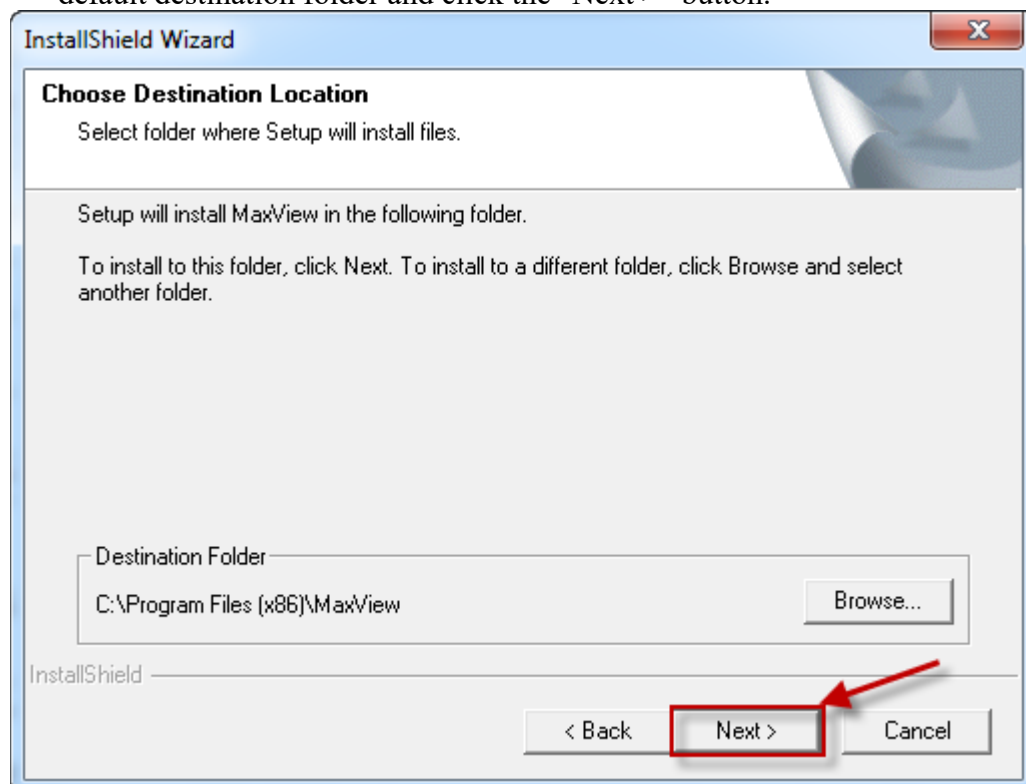
2. Another InstallShield screen will popup informing that the Wizard will install MaxView on the computer, Click "Next >".



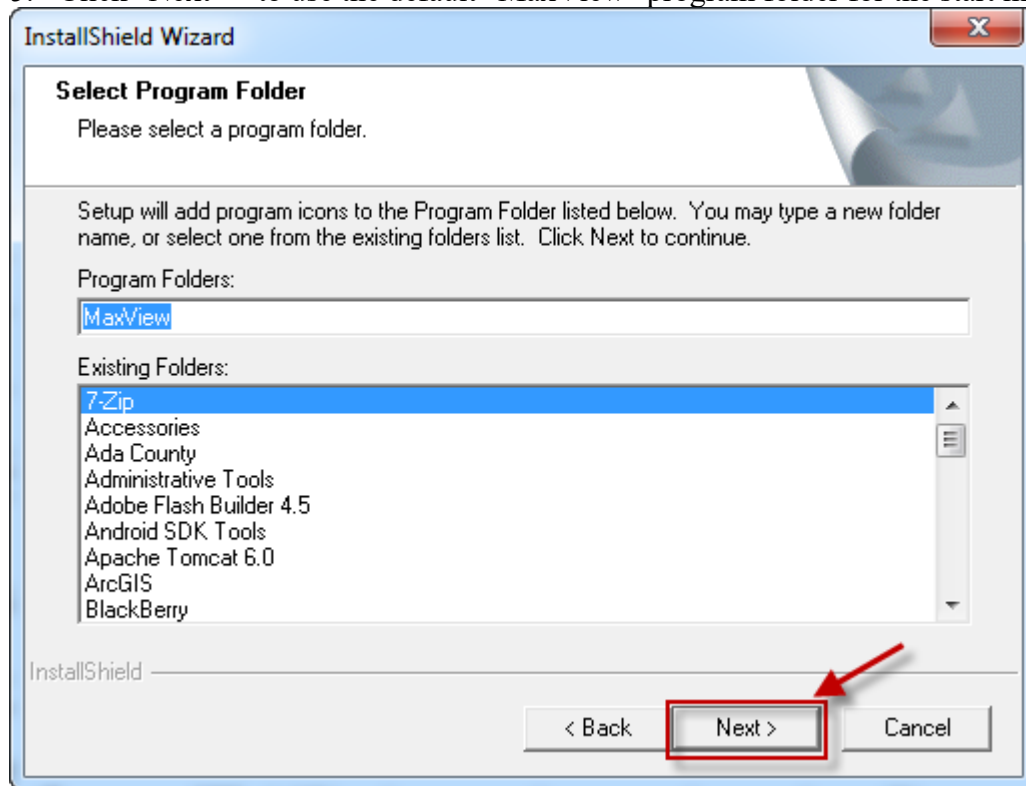
3. Read and then click the "Yes" Button to agree to the License Agreement.



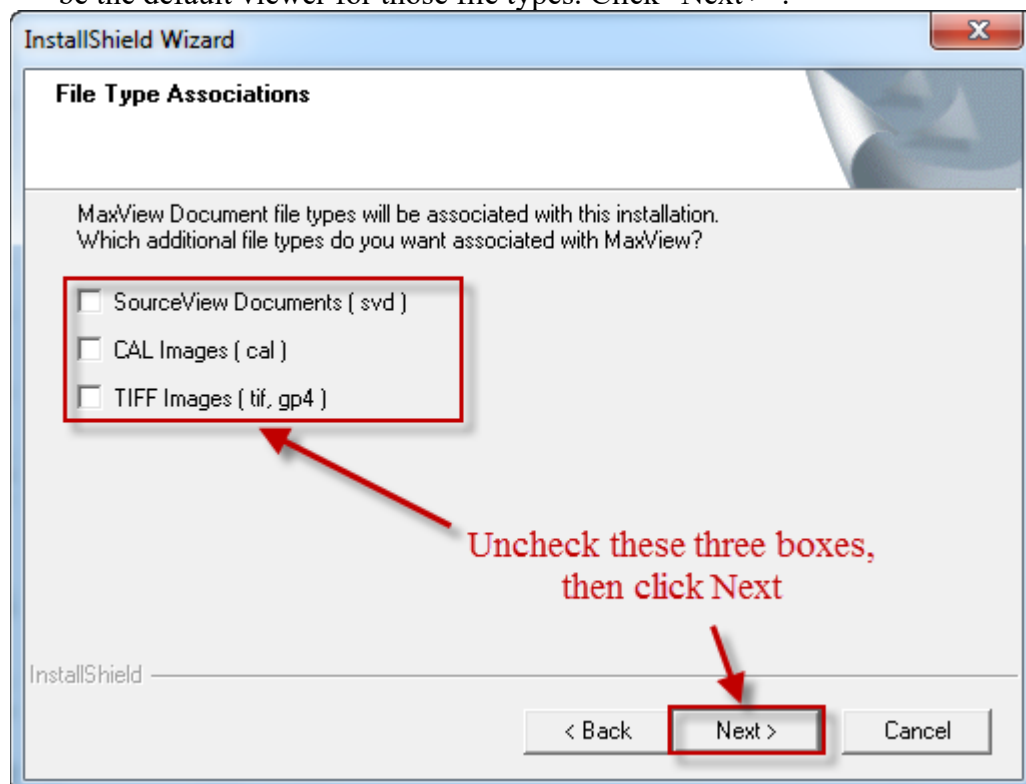
4. Browse to a different destination folder to install, if desired, otherwise use the default destination folder and click the "Next >" button.



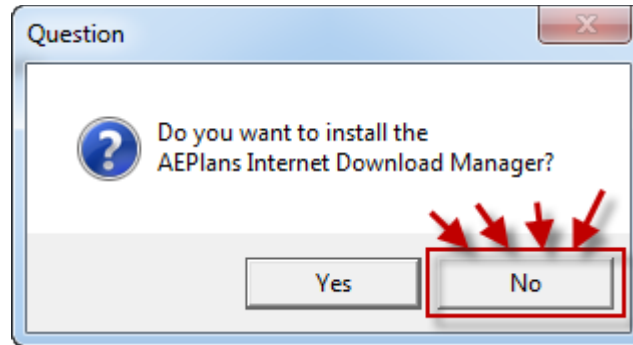
5. Click "Next >" to use the default "MaxView" program folder for the start menu.



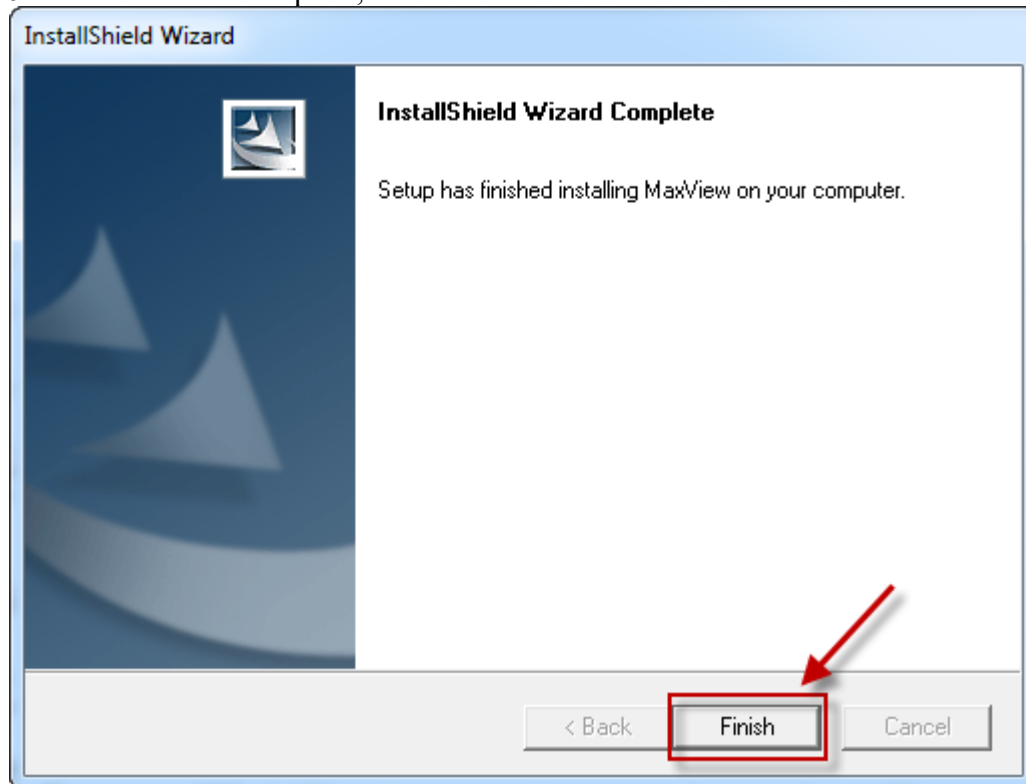
6. Remove the checks from all three document types unless user wants MaxView to be the default viewer for those file types. Click "Next >".



7. A "ReadMe.rtf" file should open with installation tips, changes, and new features for each version of MaxView. Peruse this document and then close it to continue the installation process.
8. A popup will ask to install the AEPlans Internet Download Manager. Click "No".



9. Installation is complete, Click "Finish".



Opening a Project

Once the installation is complete point browser to :

<https://adacounty.id.gov/assessor/property-assessments-records/assessors-property-records/#online-documents> and click on the desired MaxView pointer file to use:

Along with comprehensive property records and search capabilities, our site also provides access to records of survey, subdivision plats, and interactive maps. Our online maps allow you to interact with our GIS data. Currently our maps include parcel boundaries, streets, hydrography, section boundaries, city limits, parks, and schools.

Property Search & Online Maps

Online Documents

Access our online documents via the MaxView viewer, which is compatible and supported with newer versions of Microsoft Windows. All the projects that are available through Online Documents can be viewed using the MaxView software. To ensure the proper installation of the software, please take the time to read and follow the step-by-step installation instructions. You will also find a "MaxView Tips and Tricks" document that will be extremely helpful as you work with the software. To view the files below you will need to have the MaxView software installed on your computer. Once installed, to view the files, right-mouse-click on the document link below and select the "Save As a file" from the popup menu, then open the file using the MaxView application.

MaxView Software

MaxView Installation Instructions

MaxView Tips & Tricks

MaxView Software Download

Subdivisions

Subdivisions Sorted Alphabetically

Subdivisions Sorted Numerically

Records of Survey

Records of Survey sorted Numerically

Records of Survey sorted by Township, Range, & Section

Historic Documents

Boise Interurban Railroad

New York Canal

Tract Books Alphabetically

Tract Books by Section

Public Property Tax System

The Public Property Tax System provides real-time access to the Assessor's database and public version of the Property Tax System. To see an example or use the public version of our Property Tax System, please come in to the Assessor's Office. There are several computers available at our service counter for public use.

This includes:

Advanced search capabilities by

Primary Search

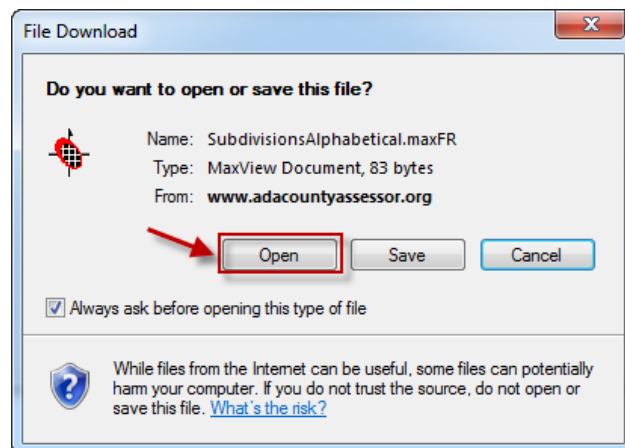
Property Master

Land Group

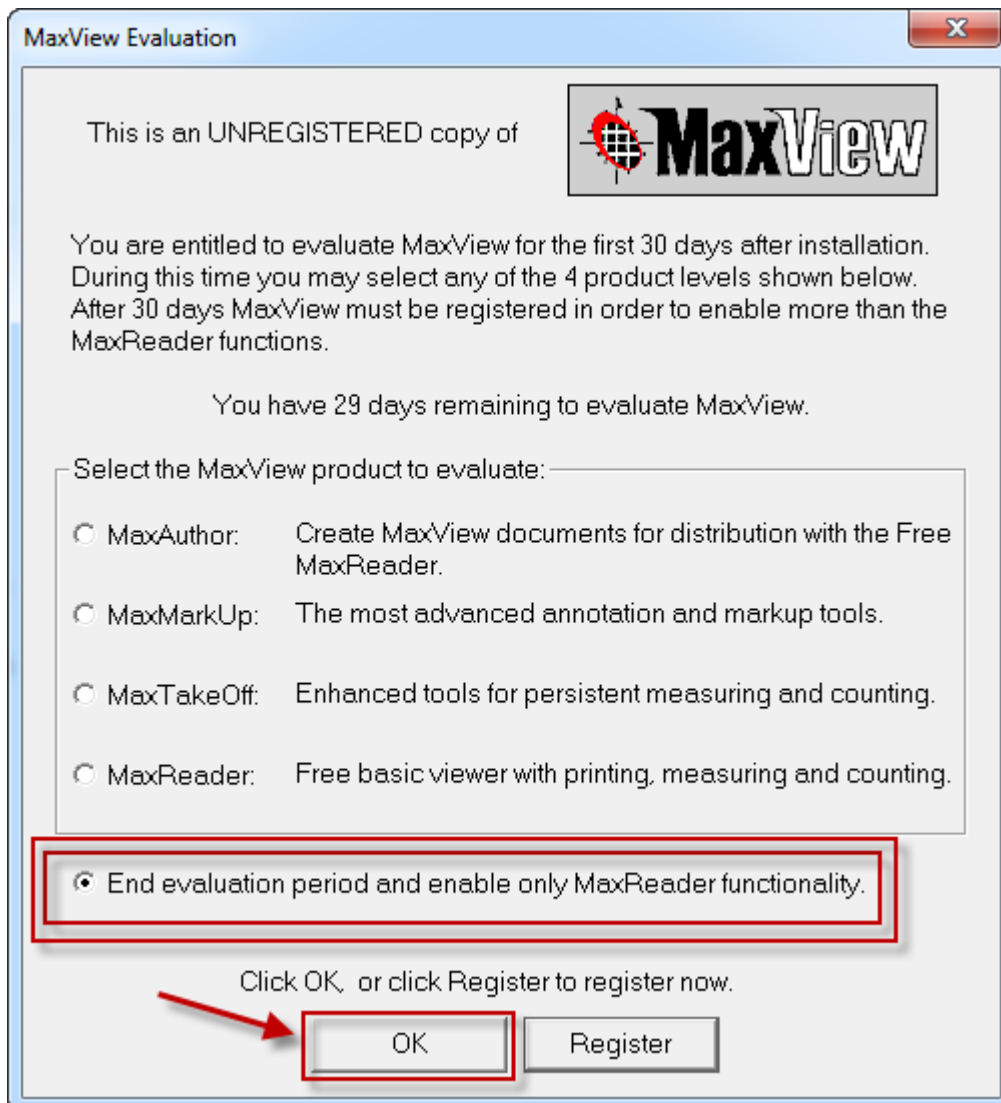
Parcel Tracking

[Contact us](#)

A message to Open or Save the file will appear. Choose "Open" to open the file in MaxView.



IMPORTANT NOTE: Some browsers may treat the file as a text file and try to view the text of the document with the browser showing a white browser page with the text of this pointer file. If that happens, navigate back to the Online Documents page, right click on the project pointer file and click "save as" or "save link as" then navigate to the saved file on the computer and double click it to open it in MaxView. At this point MaxView will pop up an Evaluation window, which will ask user to choose which product to evaluate. Select the radio button next to "End evaluation period and enable only MaxReader functionality." and click the "OK" button.



If any other option is chosen, this window will popup each time MaxView is opened.

The project will now open to the project title page with the searchable document explorer. This is the end of the install document. For basic MaxView usage and tips and tricks please open the Tips and Tricks document on our website.

If having problems with the installation of MaxView please visit their website for support: <http://www.maxview.com>. For questions or help with opening or use of the projects please contact the Ada County Assessor's Land Records office at 208-287-7262.

MH - 6/4/2012