

# ADA COUNTY ASSESSOR'S OFFICE

---



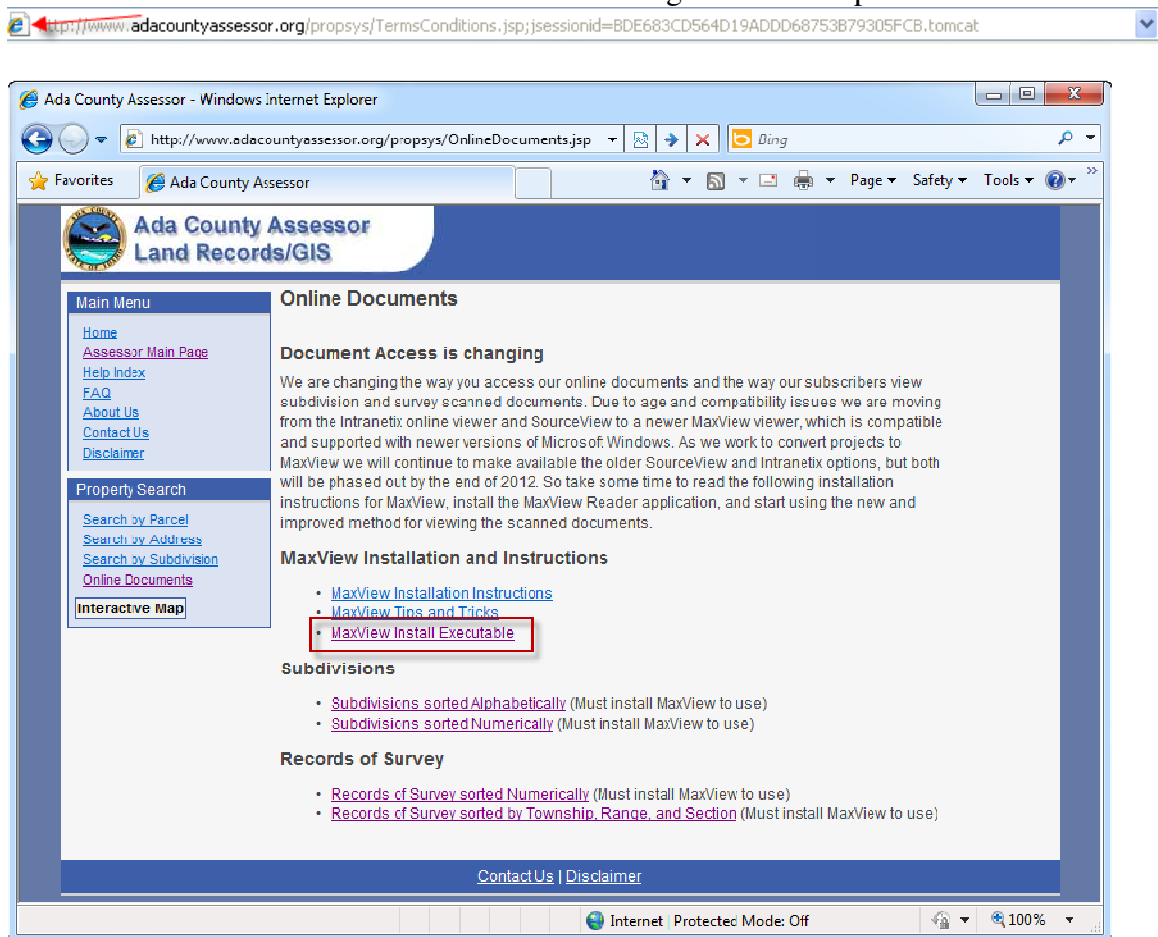
190 E Front St. Ste 107  
Boise ID 83702  
208.287.7200

Maxview is the Microsoft Windows replacement for SVReader and Intranetix Subdivision plats and Records of Survey viewers. This document will walk through the installation of MaxView and instruct how to open the projects currently available.

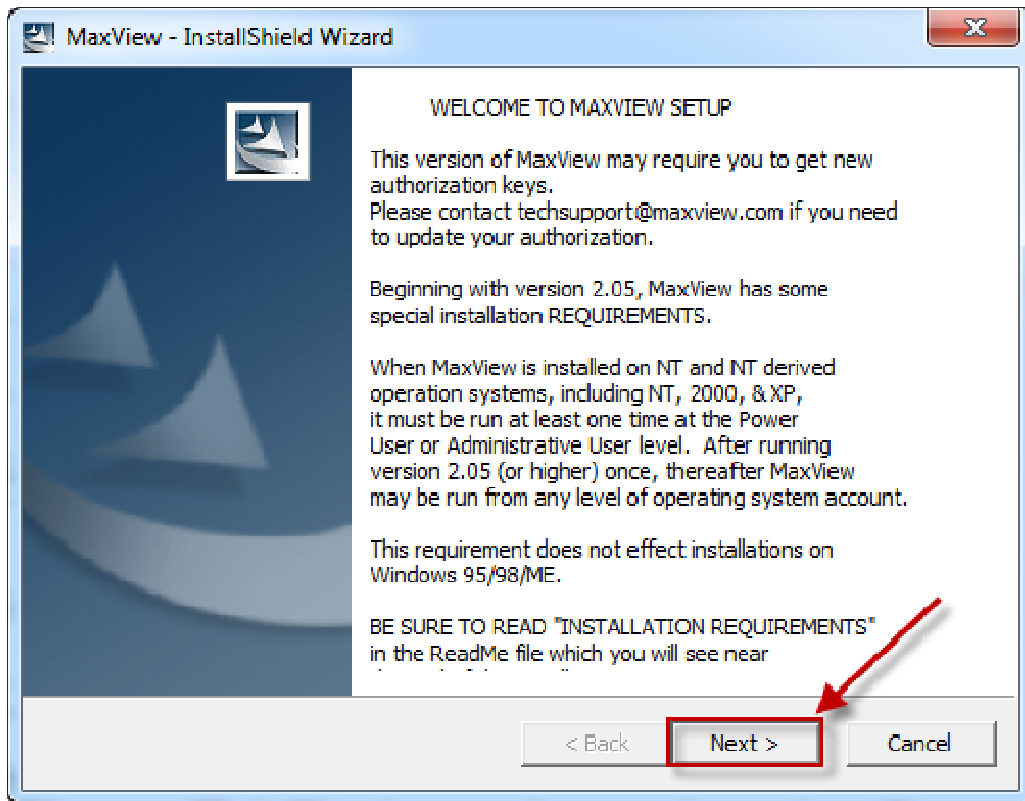
**Please do not accept the defaults in the Installation Wizard. Instead... PLEASE FOLLOW THESE INSTALLATION INSTRUCTIONS STEP BY STEP**

## Installation

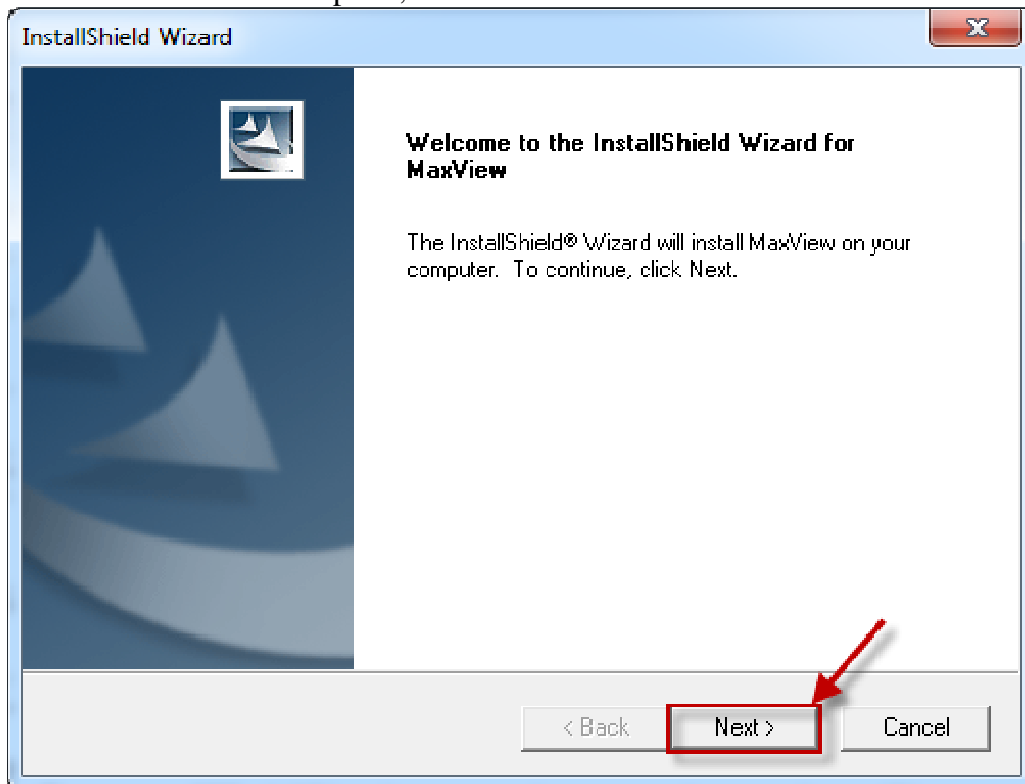
1. Download the Maxview installation executable from our website:  
<http://www.adacountyassessor.org/propsys/OnlineDocuments.jsp>.
2. Add a shortcut to the desktop for easy access to this website if you like. Left click on the icon to the left of the address bar and drag to the desktop.



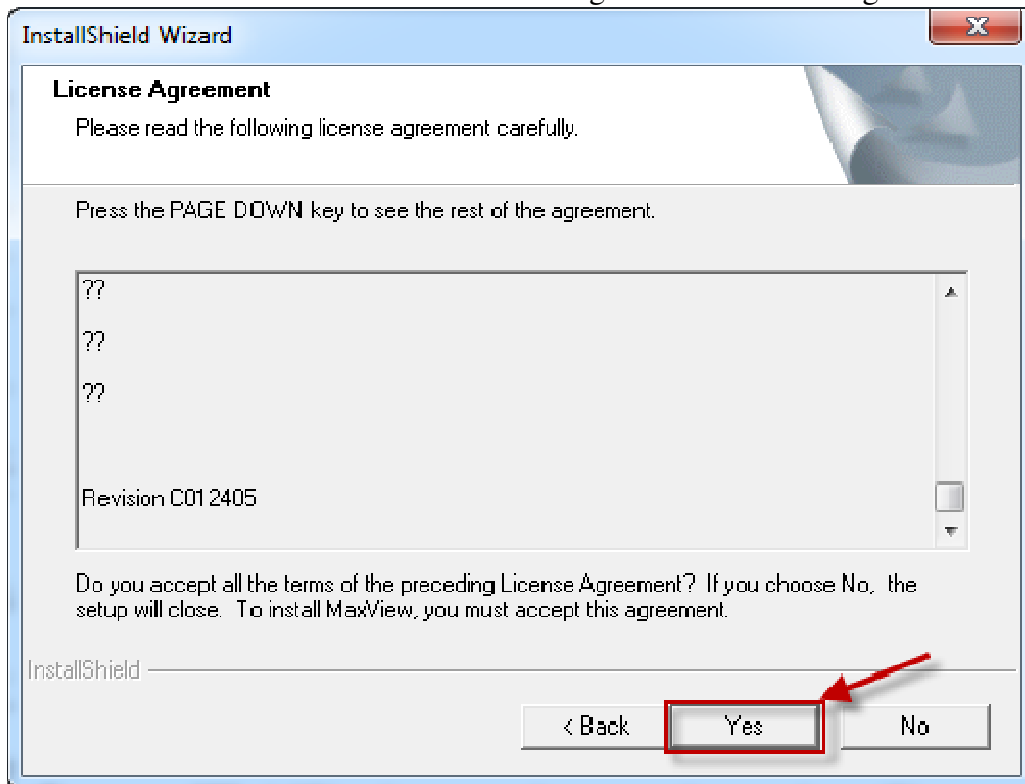
2. Click on the MaxView install executable link and a popup window will appear, which gives the option to run or save the file, click "Run". If a security warning message stating that "The publisher could not be verified" appears, click on the "Run" button or an "Install Anyway" button to continue. A MaxView InstallShield Wizard screen will open, click "Next >".



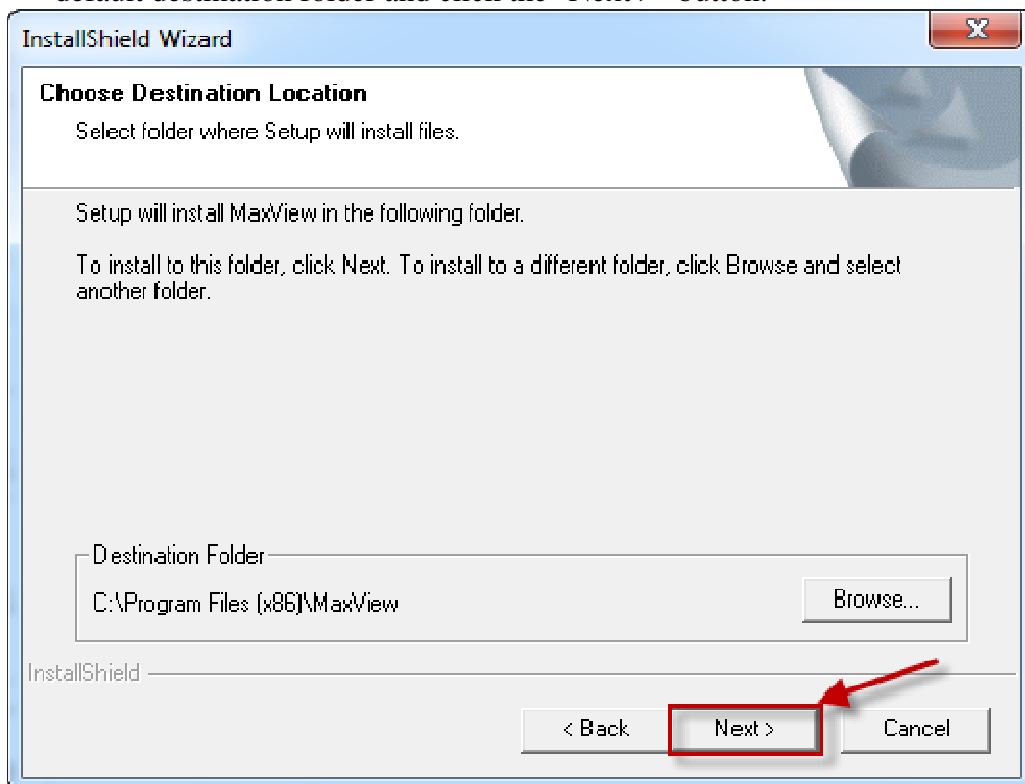
3. Another InstallShield screen will popup informing that the Wizard will install MaxView on the computer, Click "Next >".



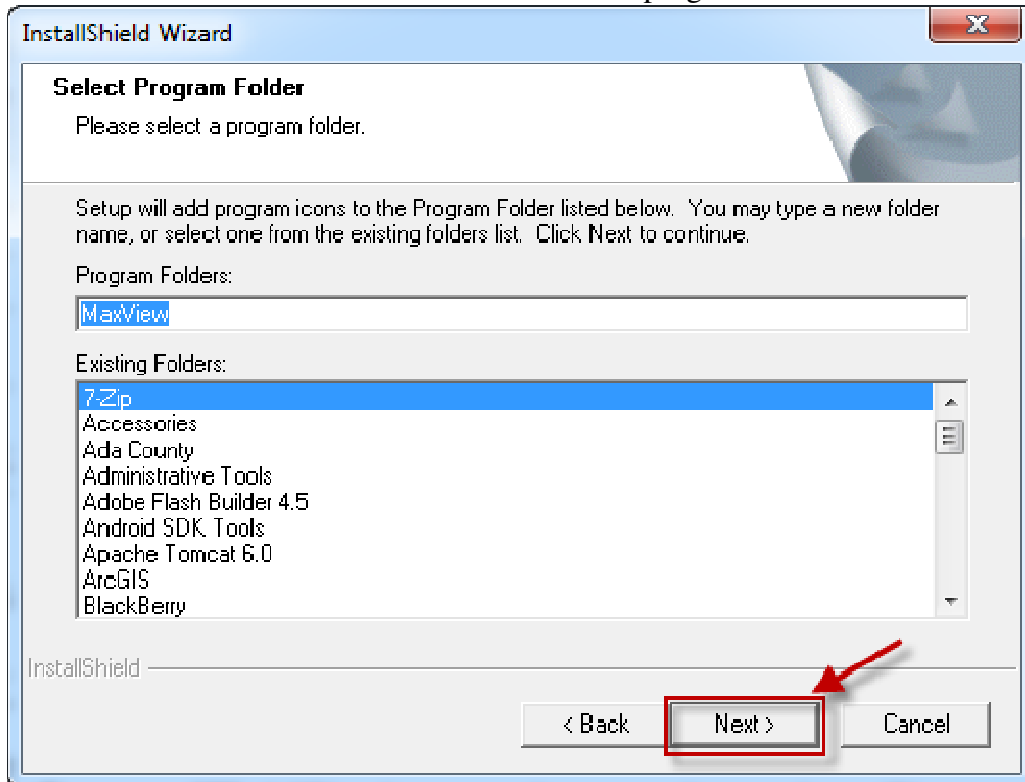
4. Read and then click the "Yes" Button to agree to the License Agreement.



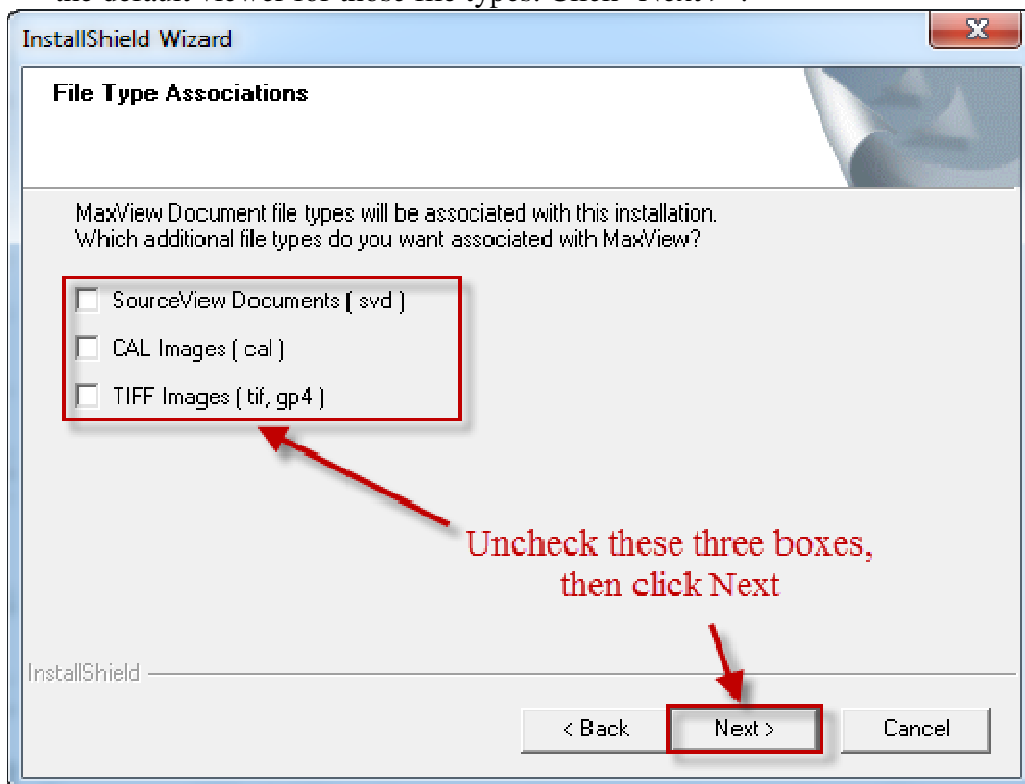
5. Browse to a different destination folder to install if desired, otherwise use the default destination folder and click the "Next >" button.



6. Click "Next >" to use the default "MaxView" program folder for the start menu.

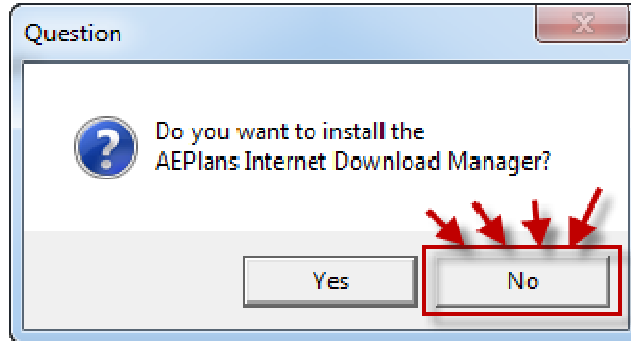


7. Remove the checks from all three document types unless wanting MaxView to be the default viewer for those file types. Click "Next >".

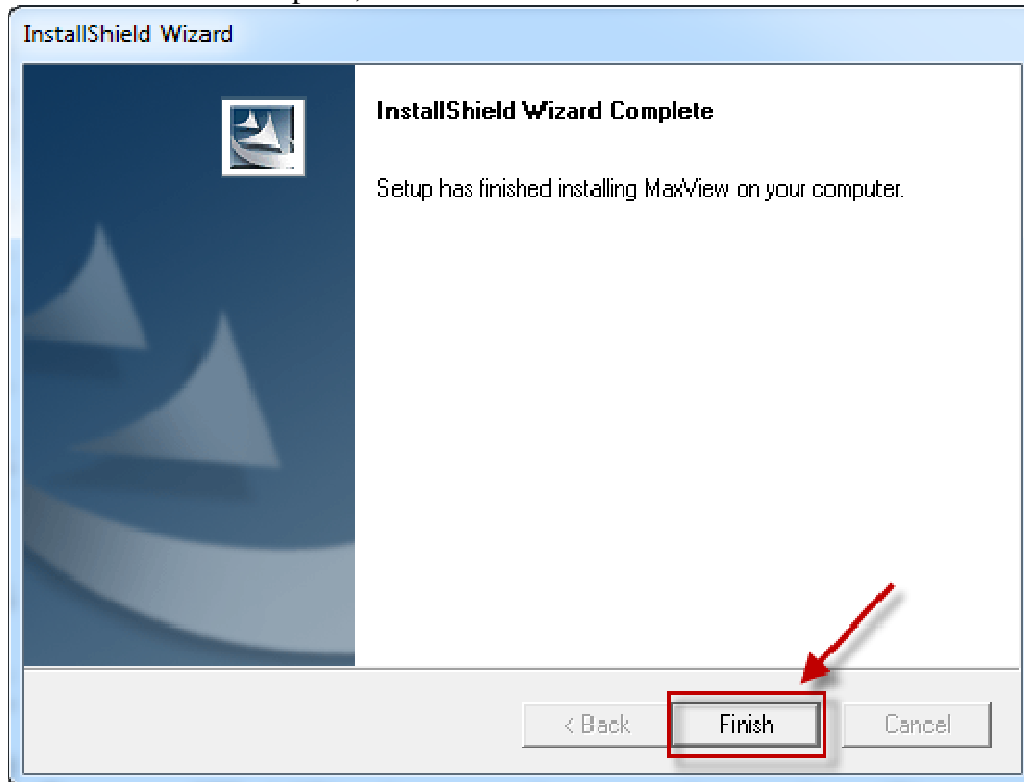


8. A "ReadMe.rtf" file should open with installation tips, changes, and new features for each version of MaxView. Peruse this document and then close it to continue the installation process.

9. A popup will ask to install the AEPlans Internet Download Manager. Click "No".

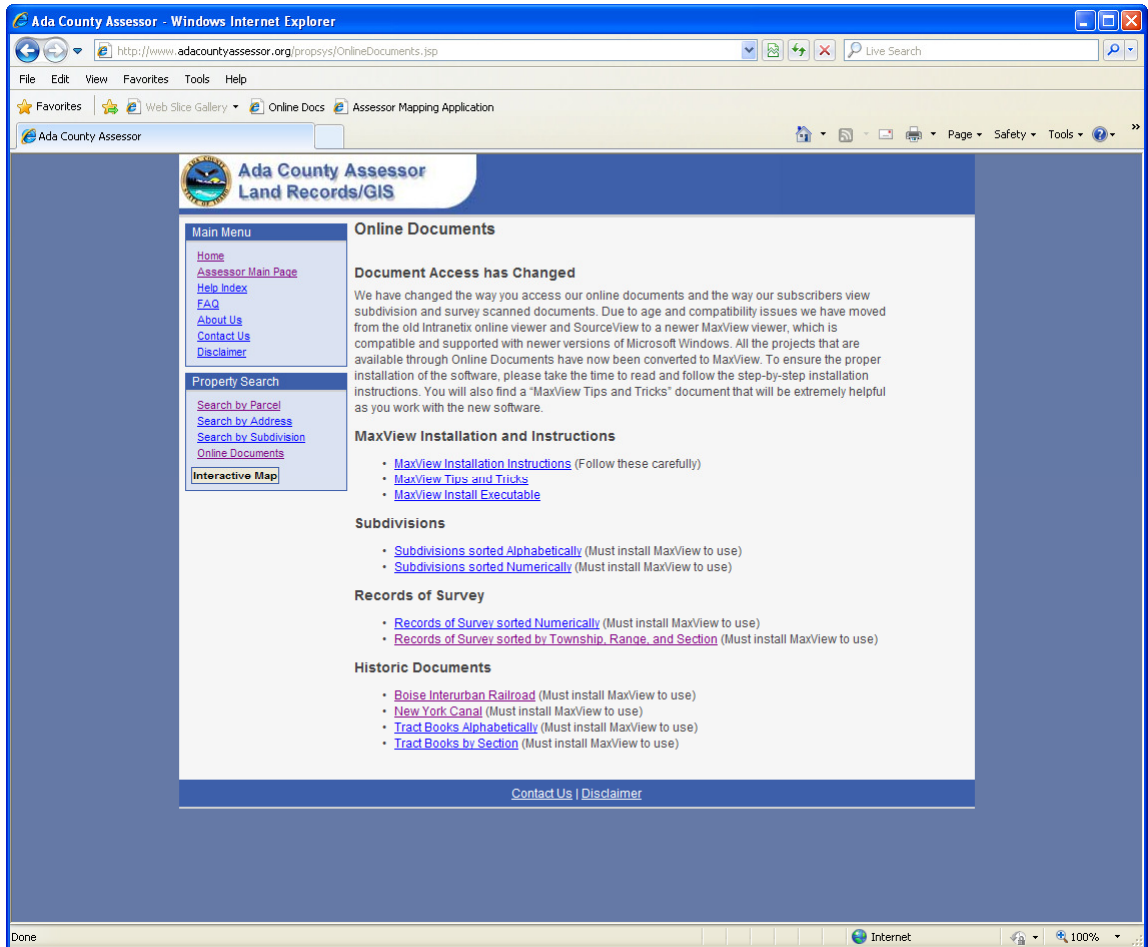


10. Installation is complete, Click "Finish".

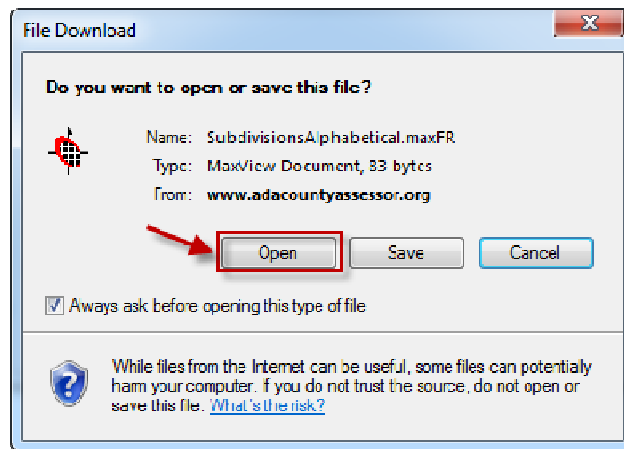


### Opening a Project

Once the installation is complete point browser to <http://www.adacountyassessor.org/propsys/OnlineDocuments.jsp> and click on the desired MaxView pointer file to use:

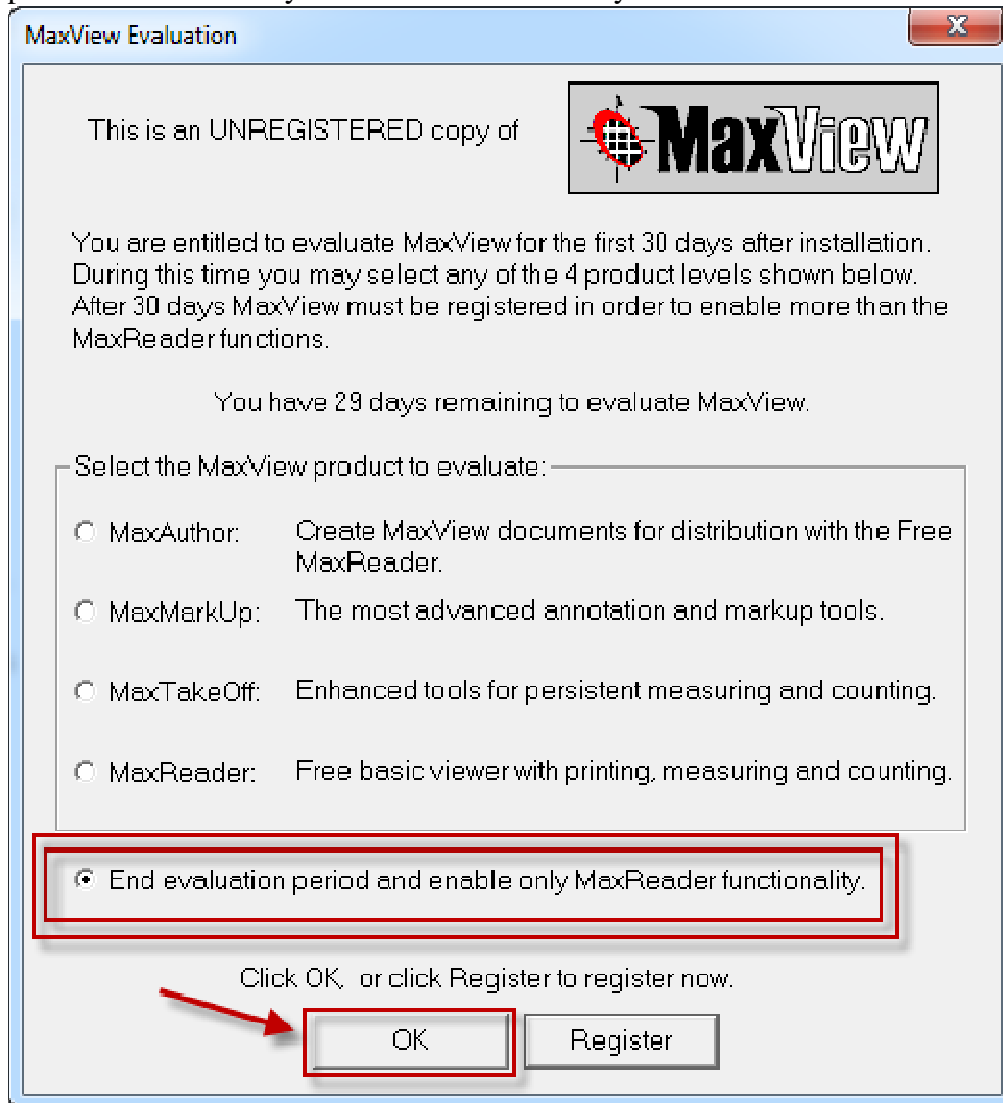


A message to Open or Save the file will appear, click "Open" to open the file in MaxView.



**IMPORTANT NOTE:** Some browsers may treat the file as a text file and try to view the text of the document with the browser showing a white browser page with the text of this pointer file, if that happens, navigate back to the Online Documents page, right click on the project pointer file and click "save as" or "save link as" then navigate to the saved file on the computer and double click it to open it in MaxView.

At this point MaxView will pop up an Evaluation window, which will ask user to choose which product to evaluate. Select the radio button next to "End evaluation period and enable only MaxReader functionality." and click the "OK" button.



If any other option is chosen, this window will popup each time MaxView is opened.

The project will now open to the project title page with the searchable document explorer. This is the end of the install document. For basic MaxView usage and tips and tricks please open the Tips and Tricks document on our website.

If having problems with the installation of MaxView please visit their website for support: <http://www.maxview.com>. For questions or help with opening or use of the projects please contact the Ada County Assessor's Land Records office at 208-287-7262.

MH - 6/4/2012